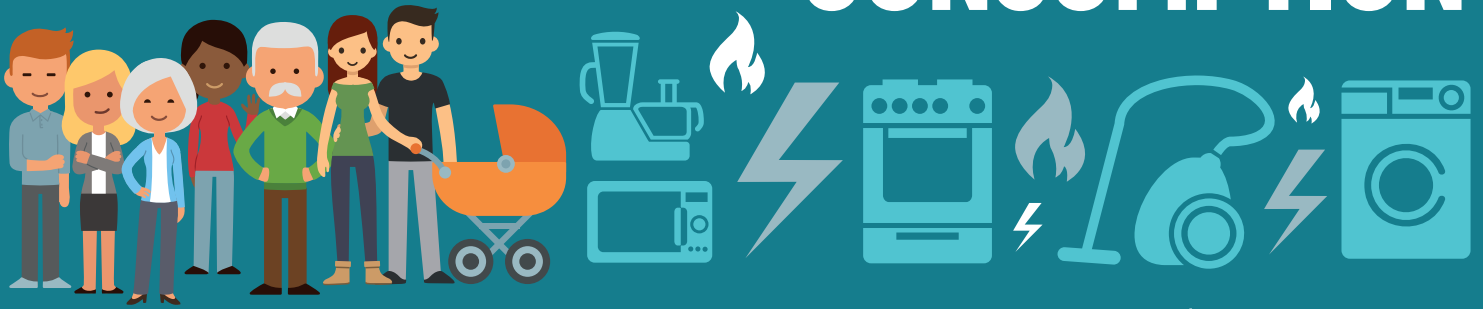


ANNUAL ENERGY CONSUMPTION



CONSUMPTION VALUES ARE USED TO COMPARE PRICES, TARIFFS AND SUPPLIERS

THIS HELPS SUPPLIERS TO

ASSIST CUSTOMERS TO COMPARE TARIFFS AND SELECT AN OFFER BEST SUITED TO THEM



CALCULATE AN ESTIMATED ANNUAL BILL OR SAVING THEY CAN MAKE ON AN OFFER

WHY ARE CER CHANGING THE TYPICAL ANNUAL CONSUMPTION FIGURES?

They do not show current level of energy use by consumers because:

- People are more conservation conscious
- Appliances and homes are more energy efficient, reducing average consumption



WHAT DOES THIS MEAN FOR CUSTOMERS?

Offers from suppliers will show a lower level of savings than before, as the new consumption levels are also lower

Price comparison websites like switcher.ie and bonkers.ie will also reflect this change

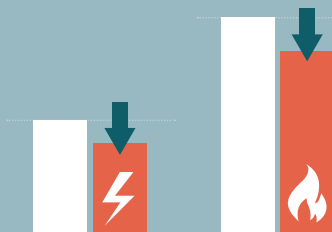


TYPICAL ANNUAL CONSUMPTION

ELECTRICITY

PREVIOUS: 5,300kWh

NEW: 4,200kWh



GAS

PREVIOUS: 13,800kWh

NEW: 11,000kWh

AVERAGE ANNUAL ELECTRICITY CONSUMPTION PER SITE FOR DOMESTIC CUSTOMERS

URBAN DOMESTIC 24HR	3,600kWh
URBAN DOMESTIC DAY/NIGHT	6,200kWh
RURAL DOMESTIC 24HR	3,900kWh
RURAL DOMESTIC DAY/NIGHT	12,000kWh

ANNUAL GAS QUANTITY PREMISES TYPE

PREMISES TYPE	RESIDENTIAL CREDIT	RESIDENTIAL PREPAYMENT
APARTMENT (1-3 BED)	7,000kWh	7,000kWh
STANDARD HOUSE (1-3 BED)	10,500kWh	8,800kWh
LARGE HOUSE (4-6 BED)	13,000kWh	10,000kWh
ONE-OFF RESIDENTIAL CUSTOMER (STANDALONE HOUSES)	15,000kWh	11,000kWh