

Generation System Performance Report: Quarter 4, 2012

The CER publishes a weekly update providing a summary to the market of relevant information concerning generation on the Irish system. This is compiled and presented as an updated report on the generation system performance for the Quarter-Year-To-Date. This information presented is provided by EirGrid. All relevant values are in exported Megawatts (MW's). Further, more detailed information can be found on the website www.eirgrid.com. Any comments/queries on this report should be addressed to: lkavanagh@cer.ie

Generation System Performance Report for Quarter 4 2012:

Figures at Peak Demand over the Week

Week starting	1st Oct	8th Oct	15th Oct	22nd Oct	29th Oct	5th Nov	12th Nov	19th Nov	26th Nov	3rd Dec	10th Dec	17th Dec	24th Dec
Peak Demand	3,780	3,901	3,973	3,970	4,199	4,258	4,284	4,301	4,517	4,517	4,589	4,445	3,915
Availability of Dispatchable Plant	6,385	5,983	6,472	6,190	6,149	6,186	6,488	6,424	6,548	6,601	6,647	6,788	6,412
Wind	394	535	462	129	840	767	290	1,006	176	1,462	419	671	1,373
North-South Tie line	58	-125	-98	74	73	76	-134	45	-227	-33	-203	-92	-78
Dispatchable Margin	3,057	2,492	2,863	2,423	2,863	2,771	2,360	3,174	1,980	3,513	2,274	2,922	3,792

Wind Figures¹ over the Week

Week starting	1st Oct	8th Oct	15th Oct	22nd Oct	29th Oct	5th Nov	12th Nov	19th Nov	26th Nov	3rd Dec	10th Dec	17th Dec	24th Dec
Minimum Wind	50	79	14	46	48	77	38	49	16	35	162	17	73
Average Wind	405	306	396	451	490	528	439	642	432	646	614	597	798
Maximum Wind	977	865	1,030	1,003	1,171	1,001	1,402	1,446	1,278	1,462	1,362	1,506	1,481

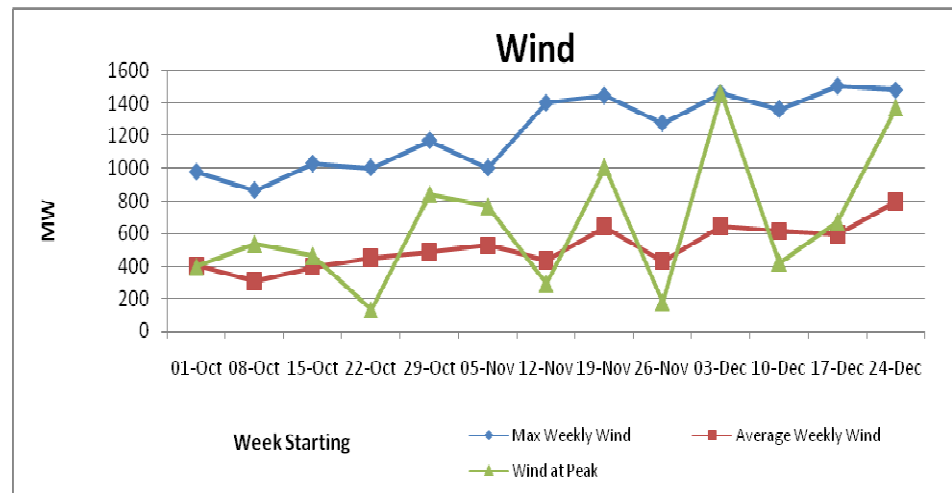
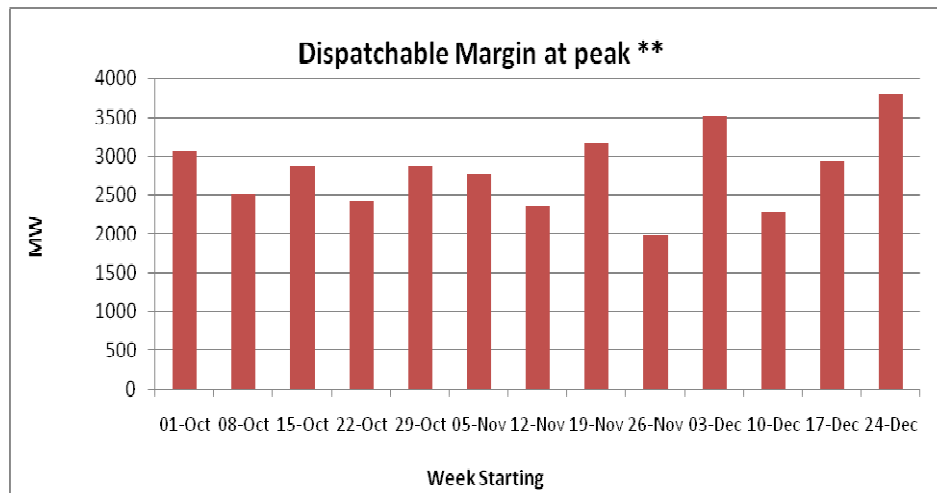
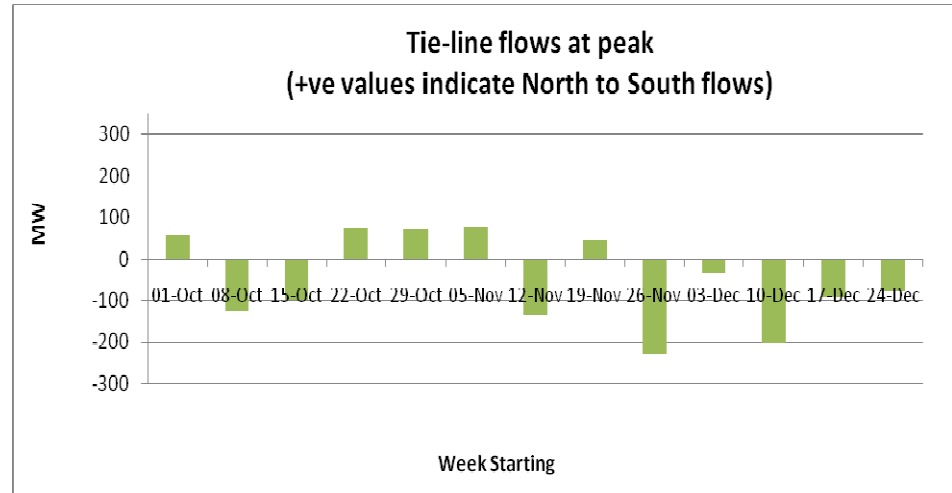
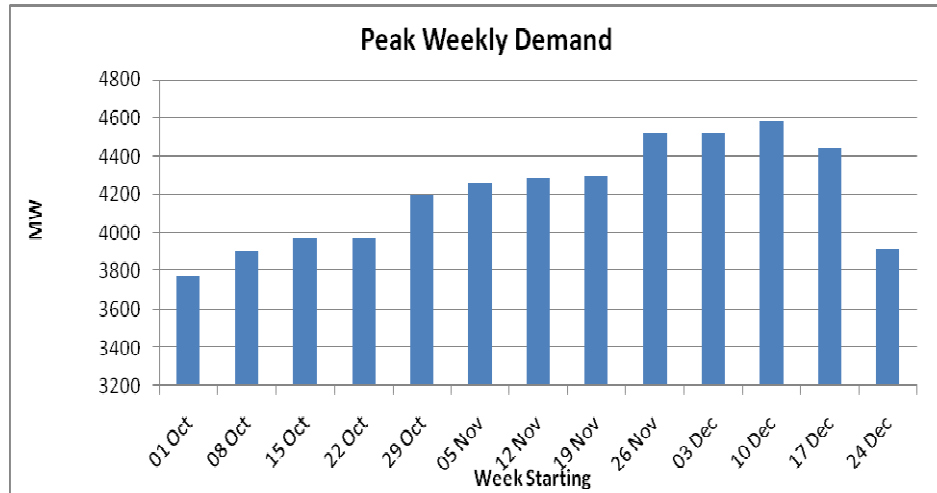
Below are a number of graphs detailing recent trends at peak:

¹ Sampled and estimated figures for the output of wind (updated every 15 minutes) are on the EirGrid website along with figures for demand updated every 15 minutes. Details of the total amount of wind connected to the system can be found on www.eirgrid.com.

* 5090 MW is an all time system peak demand. This was recorded at 17.45 on 21st December 2010

* 1506 MW is the all time record of maximum wind generation on the system. This was recorded at 23.45 on 18th December 2012.

Generation System Performance Report: Quarter 4, 2012



** Dispatchable Margin is calculated as the sum of the Availability of Dispatchable Plant, Wind and North-South tie-line flows (at the peak) less the peak demand