

Generation System Performance Report: Quarter 3, 2012

The CER publishes a weekly update providing a summary to the market of relevant information concerning generation on the Irish system. This is compiled and presented as an updated report on the generation system performance for the Quarter-Year-To-Date. This information presented is provided by EirGrid. All relevant values are in exported Megawatts (MW's). Further, more detailed information can be found on the website www.eirgrid.com. Any comments/queries on this report should be addressed to: lkavanagh@cer.ie

Generation System Performance Report for Quarter 3 2012:

Figures at Peak Demand over the Week

Week starting	2nd July	9th July	16th July	23rd July	30th July	6th Aug	13th Aug	20th Aug	27th Aug	3rd Sept	10th Sept	17th Sept	24th Sept
Peak Demand	3,498	3,399	3,437	3,494	3,423	3,398	3,527	3,428	3,450	3,443	3,493	3,608	3,741
Availability of Dispatchable Plant	5,387	6,002	6,346	5,973	5,882	5,293	5,169	5,244	5,380	5,863	6,047	6,091	6,287
Wind	418	329	524	84	967	19	1,275	610	726	451	1,072	220	1,132
North-South Tie line	43	272	243	34	-88	58	165	59	96	172	62	26	22
Dispatchable Margin	2,350	3,204	3,676	2,597	3,338	1,972	3,082	2,485	2,752	3,043	3,688	2,729	3,700

Wind Figures¹ over the Week

Week starting	2nd July	9th July	16th July	23rd July	30th July	6th Aug	13th Aug	20th Aug	27th Aug	3rd Sept	10th Sept	17th Sept	24th Sept
Minimum Wind	19	20	1	8	58	5	57	25	58	20	108	80	109
Average Wind	233	274	412	290	422	222	503	378	555	294	523	334	650
Maximum Wind	784	644	1,112	787	1,192	797	1,304	1,140	1,127	911	1,170	895	1,290

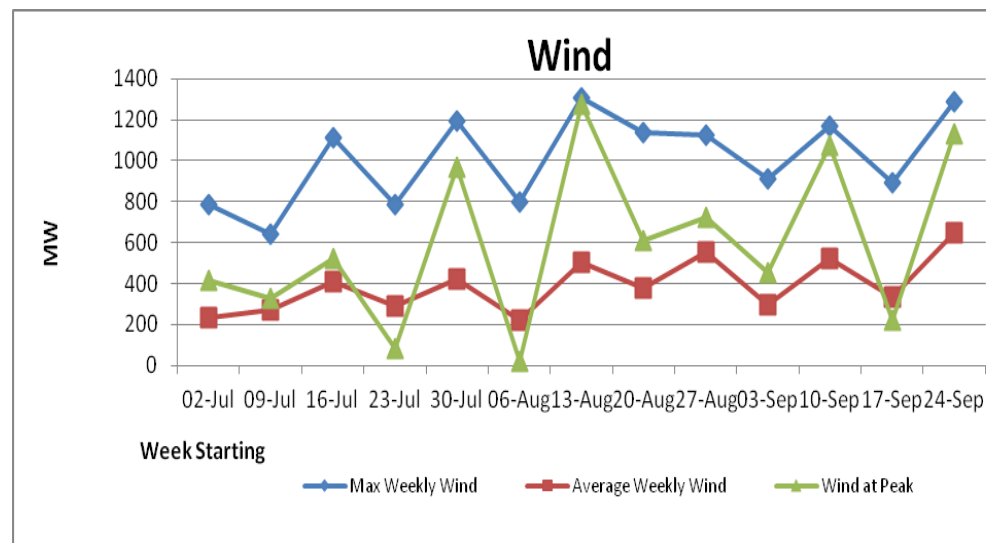
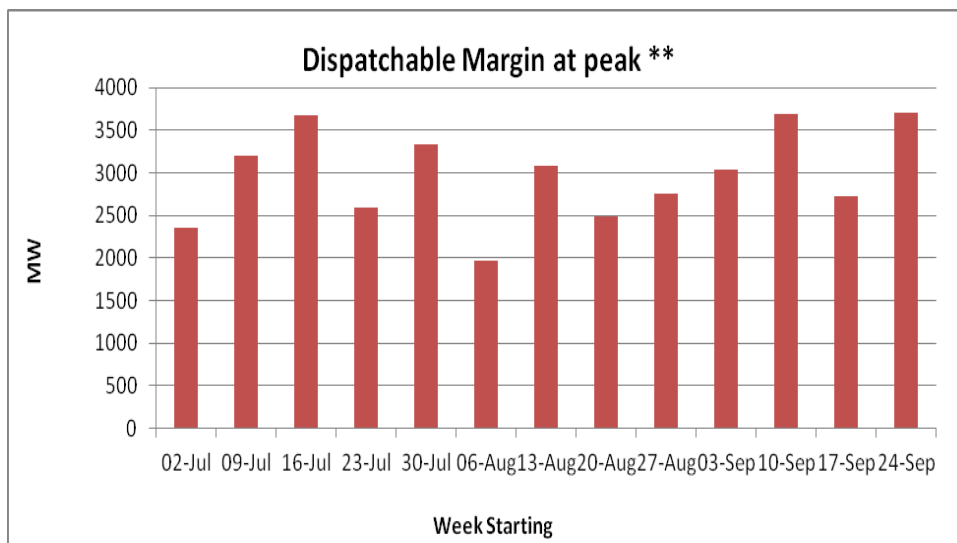
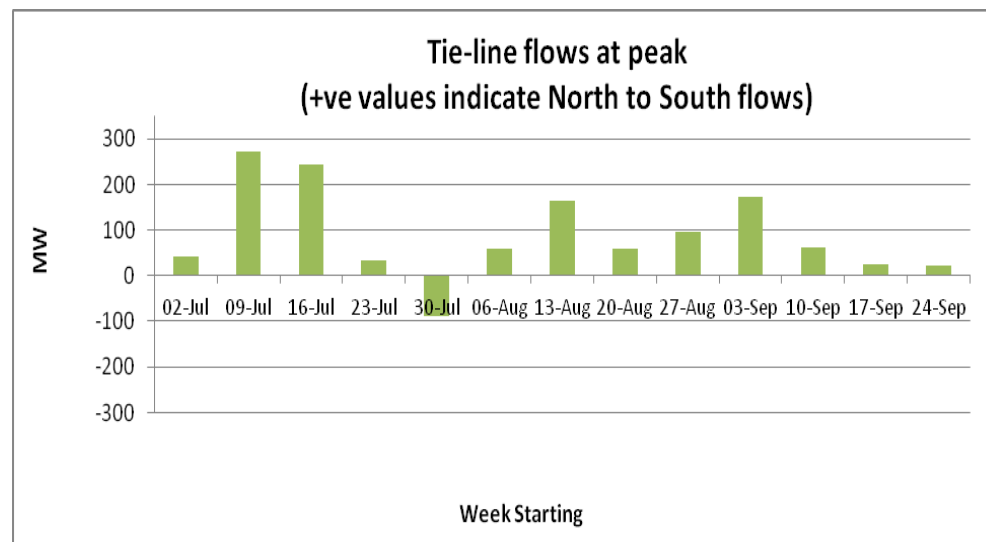
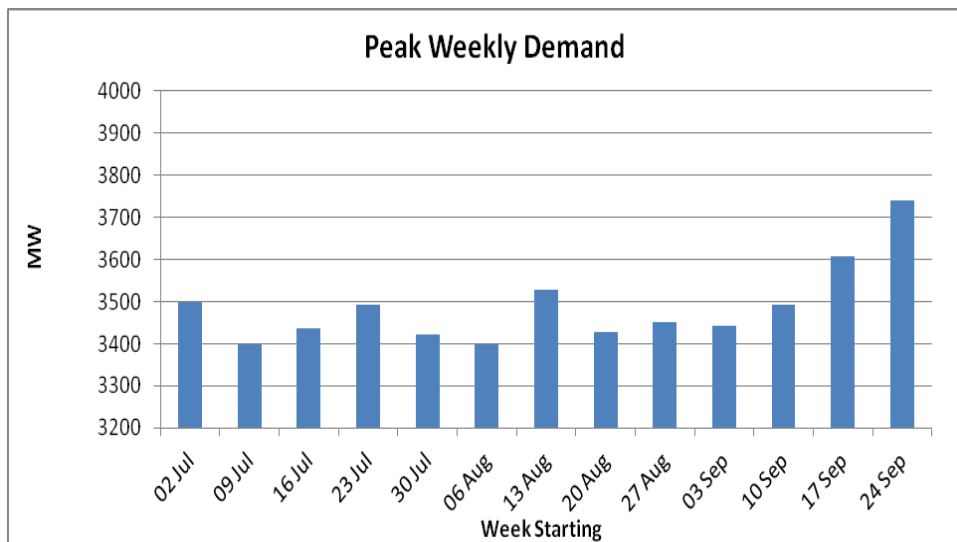
Below are a number of graphs detailing recent trends at peak:

¹ Sampled and estimated figures for the output of wind (updated every 15 minutes) are on the EirGrid website along with figures for demand updated every 15 minutes. Details of the total amount of wind connected to the system can be found on www.eirgrid.com.

* 5090 MW is an all time system peak demand. This was recorded at 17.45 on 21st December 2010

* 1474 MW is the all time record of maximum wind generation on the system. This was recorded at 19.30 on 26th November 2011.

Generation System Performance Report: Quarter 3, 2012



** Dispatchable Margin is calculated as the sum of the Availability of Dispatchable Plant, Wind and North-South tie-line flows (at the peak) less the peak demand