

Generation System Performance Report: Quarter 2, 2012

The CER publishes a weekly update providing a summary to the market of relevant information concerning generation on the Irish system. This is compiled and presented as an updated report on the generation system performance for the Quarter-Year-To-Date. This information presented is provided by EirGrid. All relevant values are in exported Megawatts (MW's). Further, more detailed information can be found on the website www.eirgrid.com.

Any comments/queries on this report should be addressed to: lkavanagh@cer.ie

Generation System Performance Report for Quarter 2 2012 (to date):

Figures at Peak Demand over the Week

Week starting	2nd Apr	9th Apr	16th Apr	23rd Apr	30th Apr	7th May	14th May	21st May	28th May	4th June	11th June	18th June	25th June
Peak Demand	3,607	3,556	3,623	3,757	3,697	3,628	3,516	3,492	3,432	3,605	3,547	3,479	3,493
Availability of Dispatchable Plant	6,150	6,136	6,218	5,765	5,566	5,797	5,885	6,005	5,207	5,367	5,777	5,839	5,822
Wind	1,173	396	864	1,251	776	380	28	392	187	853	1,093	395	179
North-South Tie line	-40.5	107	-71	171	218	-16	54	-222	207	85	-49	-35	16
Dispatchable Margin	3,675	3,083	3,388	3,430	2,863	2,533	2,451	2,683	2,169	2,700	3,274	2,720	2,524

Wind Figures¹ over the Week

Week starting	2nd Apr	9th Apr	16th Apr	23rd Apr	30th Apr	7th May	14th May	21st May	28th May	4th June	11th June	18th June	25th June
Minimum Wind	16	14	32	22	39	74	15	22	6	2	7	22	19
Average Wind	494	281	561	654	381	447	314	397	214	305	377	337	391
Maximum Wind	1,247	795	1,281	1,406	1,222	1,290	1,110	1,187	559	1,028	1,172	1,260	1,019

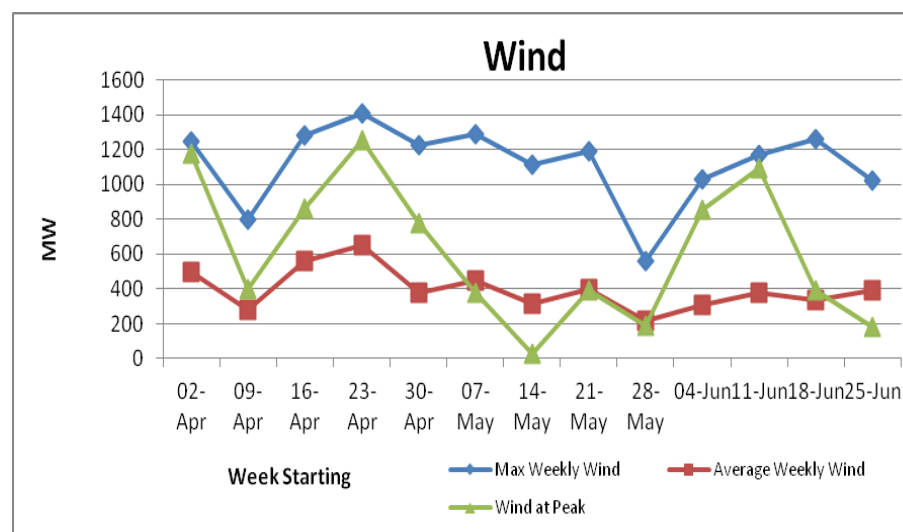
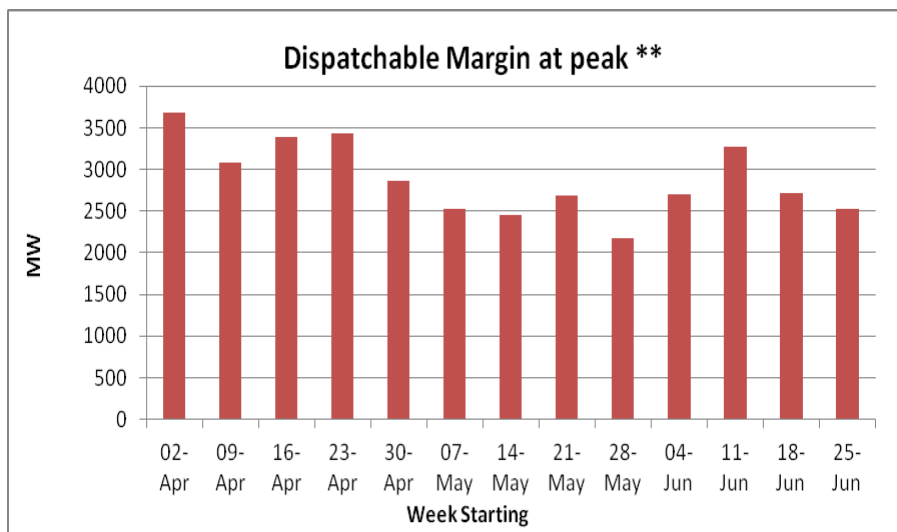
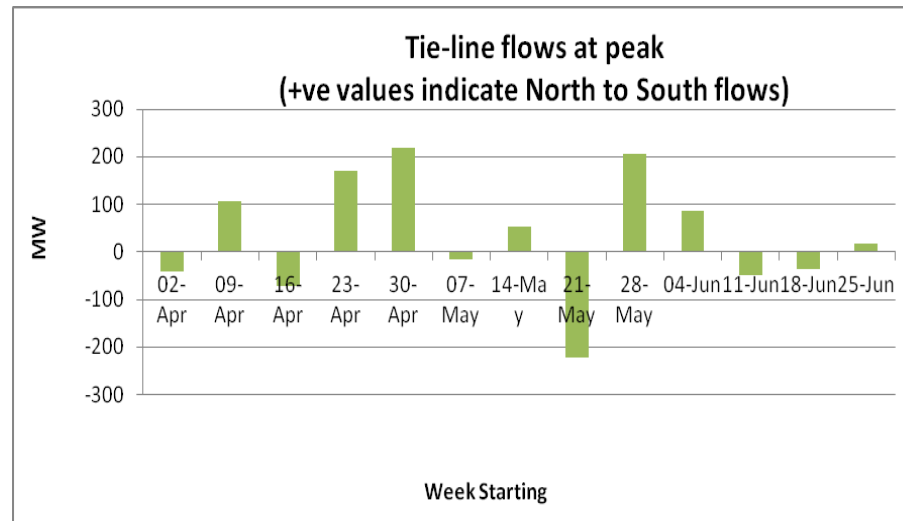
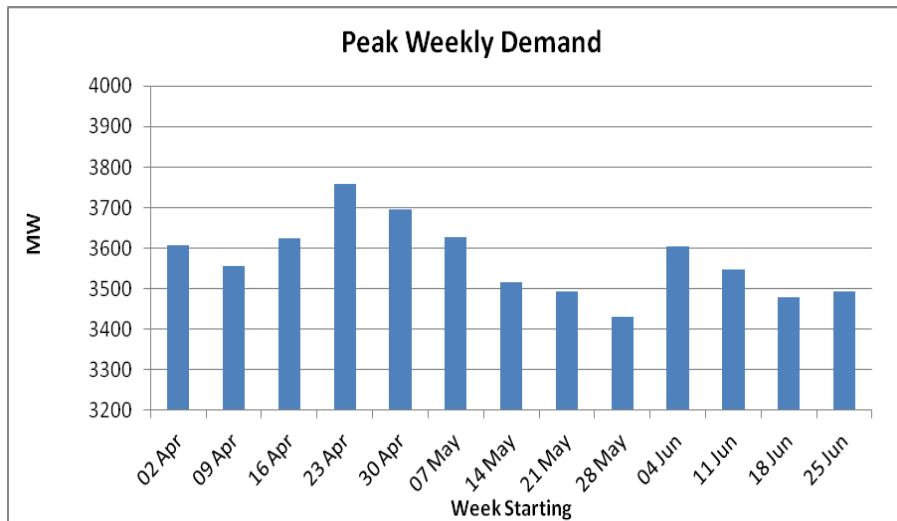
¹ Sampled and estimated figures for the output of wind (updated every 15 minutes) are on the EirGrid website along with figures for demand updated every 15 minutes. Details of the total amount of wind connected to the system can be found on www.eirgrid.com.

* 5090 MW is an all time system peak demand. This was recorded at 17.45 on 21st December 2010

* 1474 MW is the all time record of maximum wind generation on the system. This was recorded at 19.30 on 26th November 2011.

Generation System Performance Report: Quarter 2, 2012

Below are a number of graphs detailing recent trends at peak:



** Dispatchable Margin is calculated as the sum of the Availability of Dispatchable Plant, Wind and North-South tie-line flows (at the peak) less the peak demand