

# Generation System Performance Report: Quarter 1, 2012

The CER publishes a weekly update providing a summary to the market of relevant information concerning generation on the Irish system. This is compiled and presented as an updated report on the generation system performance for the Quarter-Year-To-Date.

This information presented is provided by EirGrid. All relevant values are in exported Megawatts (MW's). Further, more detailed information can be found on the website [www.eirgrid.com](http://www.eirgrid.com).

Any comments/queries on this report should be addressed to: [lkavanagh@cer.ie](mailto:lkavanagh@cer.ie)

## Generation System Performance Report for Quarter 1 2012 (to date):

### *Figures at Peak Demand over the Week*

<b>Week starting</b>	<b>2<sup>nd</sup> Jan</b>	<b>9<sup>th</sup> Jan</b>	<b>16<sup>th</sup> Jan</b>	<b>23<sup>rd</sup> Jan</b>	<b>30<sup>th</sup> Jan</b>	<b>6<sup>th</sup> Feb</b>	<b>13<sup>th</sup> Feb</b>	<b>20<sup>th</sup> Feb</b>	<b>27<sup>th</sup> Feb</b>	<b>5<sup>th</sup> Mar</b>	<b>12<sup>th</sup> Mar</b>	<b>19<sup>th</sup> Mar</b>	<b>26<sup>th</sup> Mar</b>
Peak Demand	4,643	4,303	4,332	4,307	4,474	4,358	4,179	4,165	4,064	4,128	4,009	3,928	3,612
Availability of Dispatchable Plant	6,180	6,265	6,022	6,244	6,374	6,367	6,328	6,219	6,103	6,118	6,170	5,789	5,741
Wind	1,211	261	636	575	432	898	1,032	928	477	1,324	39	150	131
North-South Tie line	-41	-254	-211	-108	-192	-118	-5	87	113	67	199	103	163
<b>Dispatchable Margin</b>	<b>2,707</b>	<b>1,969</b>	<b>2,115</b>	<b>2,404</b>	<b>2,140</b>	<b>2,789</b>	<b>3,176</b>	<b>3,069</b>	<b>2,629</b>	<b>3,381</b>	<b>2,399</b>	<b>2,114</b>	<b>2,423</b>

### *Wind Figures<sup>1</sup> over the Week*

<b>Week starting</b>	<b>2<sup>nd</sup> Jan</b>	<b>9<sup>th</sup> Jan</b>	<b>16<sup>th</sup> Jan</b>	<b>23<sup>rd</sup> Jan</b>	<b>30<sup>th</sup> Jan</b>	<b>6<sup>th</sup> Feb</b>	<b>13<sup>th</sup> Feb</b>	<b>20<sup>th</sup> Feb</b>	<b>27<sup>th</sup> Feb</b>	<b>5<sup>th</sup> Mar</b>	<b>12<sup>th</sup> Mar</b>	<b>19<sup>th</sup> Mar</b>	<b>26<sup>th</sup> Mar</b>
Minimum Wind	146	7	145	44	353	12	82	45	93	19	14	148	9
Average Wind	927	562	850	530	498	348	710	562	510	583	356	592	187
Maximum Wind	1,420	1,208	1,416	1,383	676	1218	1,210	1,313	1,246	1,324	1,050	1,103	459

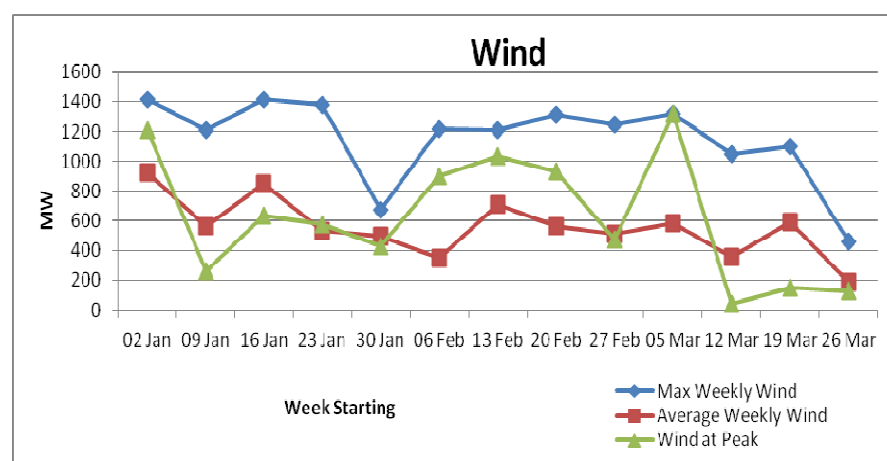
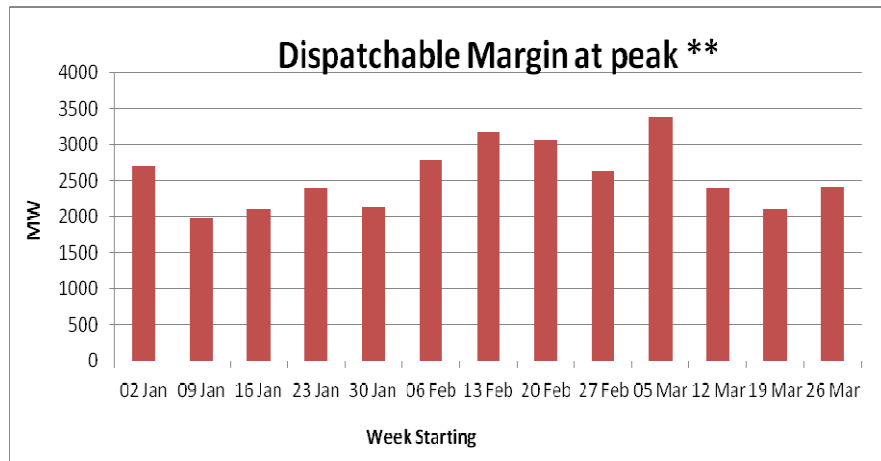
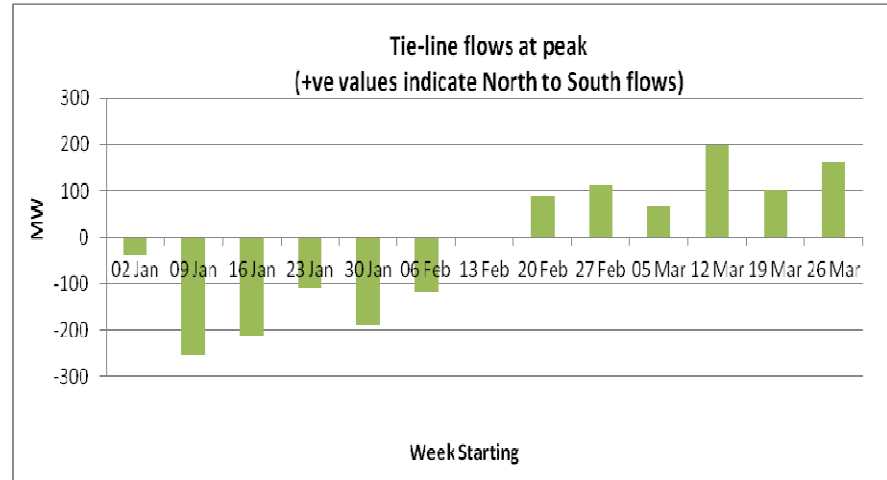
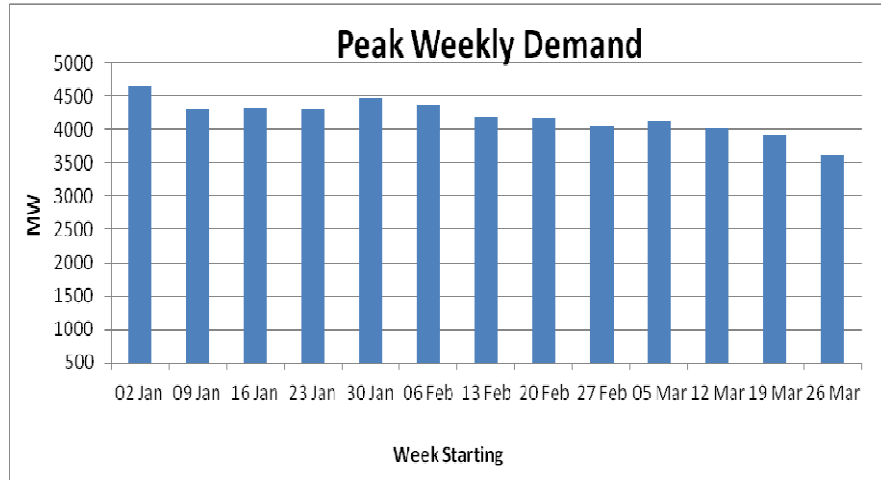
<sup>1</sup> Sampled and estimated figures for the output of wind (updated every 15 minutes) are on the EirGrid website along with figures for demand updated every 15 minutes. Details of the total amount of wind connected to the system can be found on [www.eirgrid.com](http://www.eirgrid.com).

\* 5090 MW is an all time system peak demand. This was recorded at 17.45 on 21<sup>st</sup> December 2010

\* 1474 MW is the all time record of maximum wind generation on the system. This was recorded at 19.30 on 26<sup>th</sup> November 2011.

# Generation System Performance Report: Quarter 1, 2012

Below are a number of graphs detailing recent trends at peak:



\*\* Dispatchable Margin is calculated as the sum of the Availability of Dispatchable Plant, Wind and North-South tie-line flows (at the peak) less the peak demand