

Generation System Performance Report: Quarter 4, 2011

The CER publishes a weekly update providing a summary to the market of relevant information concerning generation on the Irish system. This is compiled and presented as an updated report on the generation system performance for the Quarter-Year-To-Date. This information presented is provided by EirGrid. All relevant values are in exported Megawatts (MW's). Further, more detailed information can be found on the website www.eirgrid.com. Any comments/queries on this report should be addressed to: lkavanagh@cer.ie

Generation System Performance Report for Quarter 4 2011 (to date):

Figures at Peak Demand over the Week

| <i>Week starting</i> | <i>3rd Oct</i> | <i>10th Oct</i> | <i>17th Oct</i> | <i>24th Oct</i> | <i>31st Oct</i> | <i>7th Nov</i> | <i>14th Nov</i> | <i>21st Nov</i> | <i>28th Nov</i> | <i>5th Dec</i> | <i>12th Dec</i> | <i>19th Dec</i> | <i>26th Dec</i> |
|------------------------------------|--------------------------------------|---------------------------------------|---------------------------------------|---------------------------------------|---------------------------------------|--------------------------------------|---------------------------------------|---------------------------------------|---------------------------------------|--------------------------------------|---------------------------------------|---------------------------------------|---------------------------------------|
| Peak Demand | 3,824 | 3,864 | 4,049 | 4,059 | 4,290 | 4,276 | 4,262 | 4,336 | 4,392 | 4,538 | 4,643 | 4,559 | 4,643 |
| Availability of Dispatchable Plant | 4,790 | 5,962 | 6,261 | 5,771 | 6,098 | 5,782 | 6,216 | 6,154 | 6,216 | 6,153 | 6,218 | 6,245 | 6,172 |
| Wind | 1,261 | 156 | 834 | 169 | 1,350 | 680 | 223 | 729 | 1,446 | 768 | 1,207 | 967 | 1,358 |
| North-South Tie line | 161 | -72 | -52 | 59 | 62 | 83 | 181 | 65 | 50 | 28 | -116 | -88 | -70 |
| Dispatchable Margin | 2,388 | 2,182 | 2,994 | 1,940 | 3,220 | 2,269 | 2,358 | 2,612 | 3,320 | 2,411 | 2,666 | 2,565 | 2,817 |

Wind Figures¹ over the Week

| <i>Week starting</i> | <i>3rd Oct</i> | <i>10th Oct</i> | <i>17th Oct</i> | <i>24th Oct</i> | <i>31st Oct</i> | <i>7th Nov</i> | <i>14th Nov</i> | <i>21st Nov</i> | <i>28th Nov</i> | <i>5th Dec</i> | <i>12th Dec</i> | <i>19th Dec</i> | <i>26th Dec</i> |
|-----------------------------|--------------------------------------|---------------------------------------|---------------------------------------|---------------------------------------|---------------------------------------|--------------------------------------|---------------------------------------|---------------------------------------|---------------------------------------|--------------------------------------|---------------------------------------|---------------------------------------|---------------------------------------|
| Minimum Wind | 296 | 10 | 96 | 10 | 34 | 214 | 61 | 123 | 62 | 167 | 85 | 232 | 220 |
| Average Wind | 822 | 456 | 718 | 548 | 514 | 803 | 657 | 801 | 830 | 778 | 698 | 923 | 1,026 |
| Maximum Wind | 1,341 | 1,067 | 1,345 | 1,379 | 1,412 | 1,400 | 1,391 | 1,474 | 1,468 | 1,404 | 1,399 | 1,448 | 1,463 |

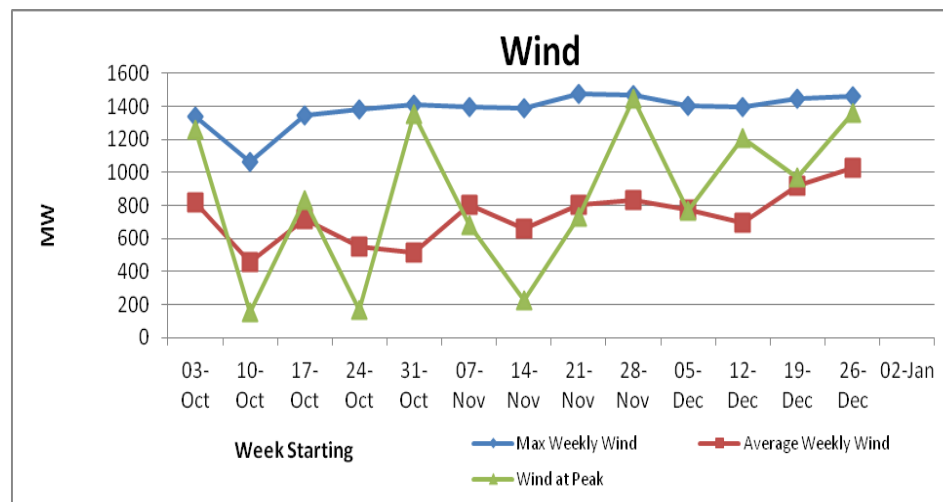
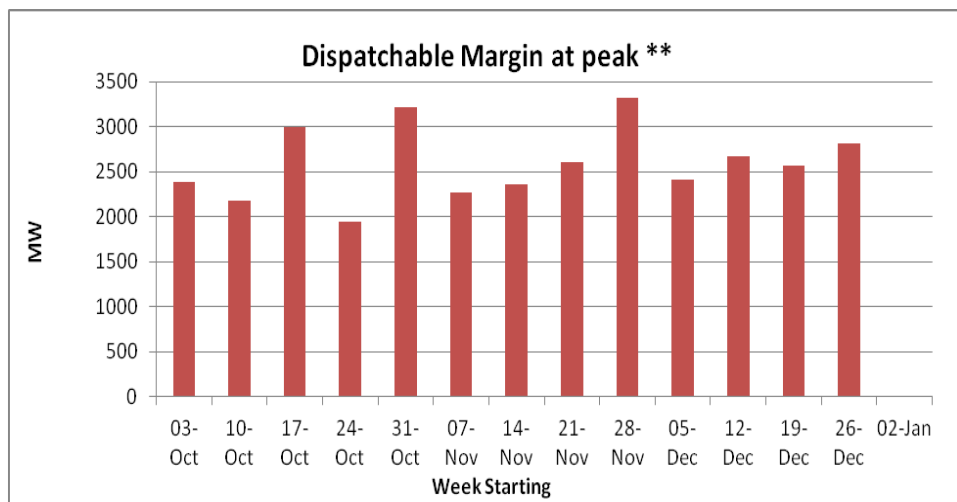
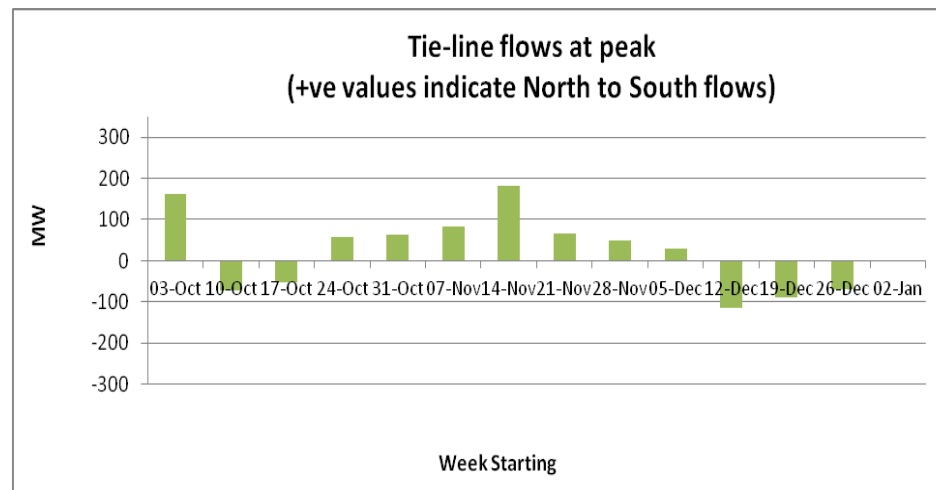
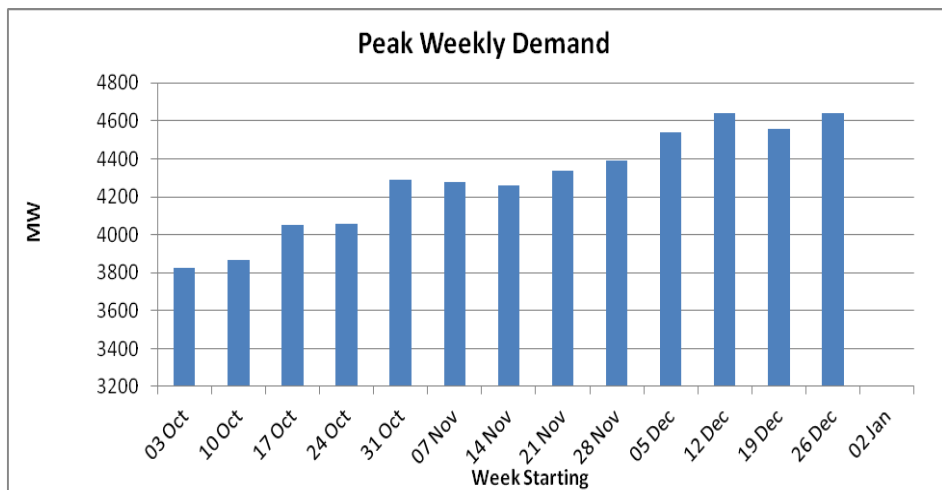
¹ Sampled and estimated figures for the output of wind (updated every 15 minutes) are on the EirGrid website along with figures for demand updated every 15 minutes. Details of the total amount of wind connected to the system can be found on www.eirgrid.com.

* 5090 MW is an all time system peak demand. This was recorded at 17.45 on 21st December 2010

* 1474 MW is an all time record of maximum wind generation on the system. This was recorded at 19.30 on 26th November 2011.

Generation System Performance Report: Quarter 4, 2011

Below are a number of graphs detailing recent trends at peak:



** Dispatchable Margin is calculated as the sum of the Availability of Dispatchable Plant, Wind and North-South tie-line flows (at the peak) less the peak demand