

Generation System Performance Report: Quarter 3, 2009

The Commission publishes a weekly update providing a summary to the market of relevant information concerning generation on the Irish system. This is compiled and presented as an updated report on the generation system performance for the Quarter-Year-To-Date.

This information presented is provided by EirGrid. All relevant values are in exported Megawatts (MW's). Further, more detailed information can be found on the website www.eirgrid.com.

Any comments/queries on this report should be addressed to Stacy Altman: saltman@cer.ie

Generation System Performance Report for Quarter 3 2009 (to date):

Figures at Peak Demand over the Week

Week starting	6th Jul	13th Jul	20th Jul	27th Jul	31st Jul	3rd Aug	10th Aug	17th Aug	24th Aug	7th Sep	14th Sep	21st Sep	28th Sep
Peak Demand	3642	3473	3570	3484	3344	3341	3572	3652	3570	3665	3596	3639	3672
Availability of Dispatchable Plant	4822	4500	4745	4820	5131	4747	4659	4443	4521	5001	5061	5405	5254
Wind	21	191	124	602	121	225	632	344	520	327	89	102	247
North-South Tie line	197	212	85	217	147	125	154	154	162	162	36	98	80
Dispatchable Margin	1398	1430	1384	2155	2055	1756	1873	1289	1633	1825	1590	1966	1909

Wind Figures¹ over the Week

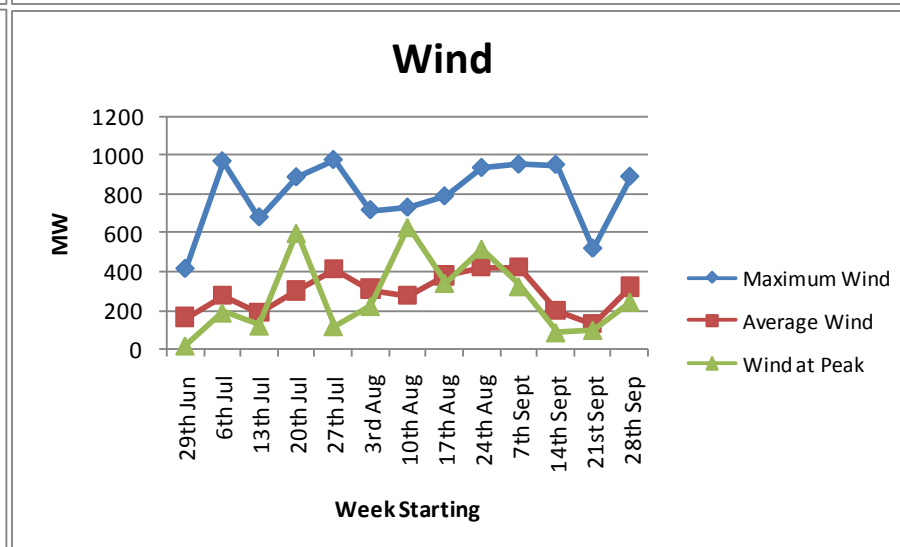
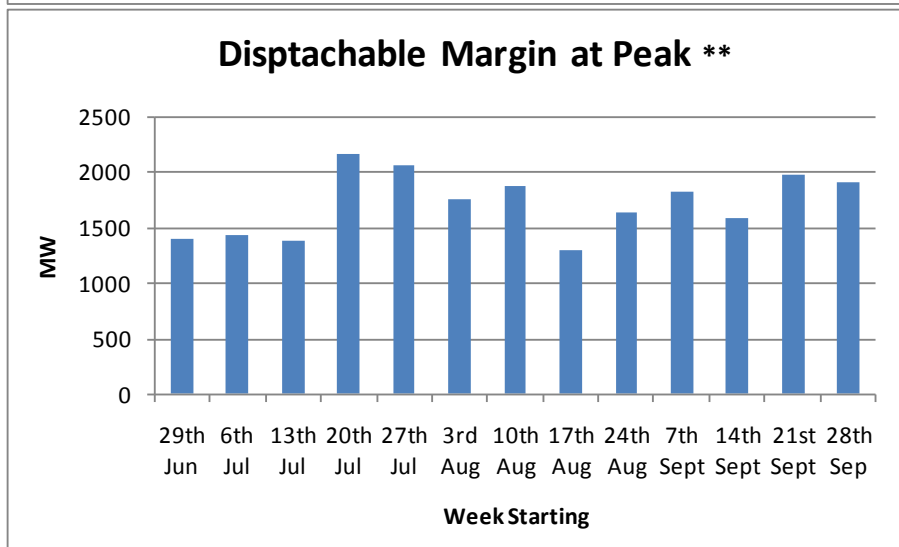
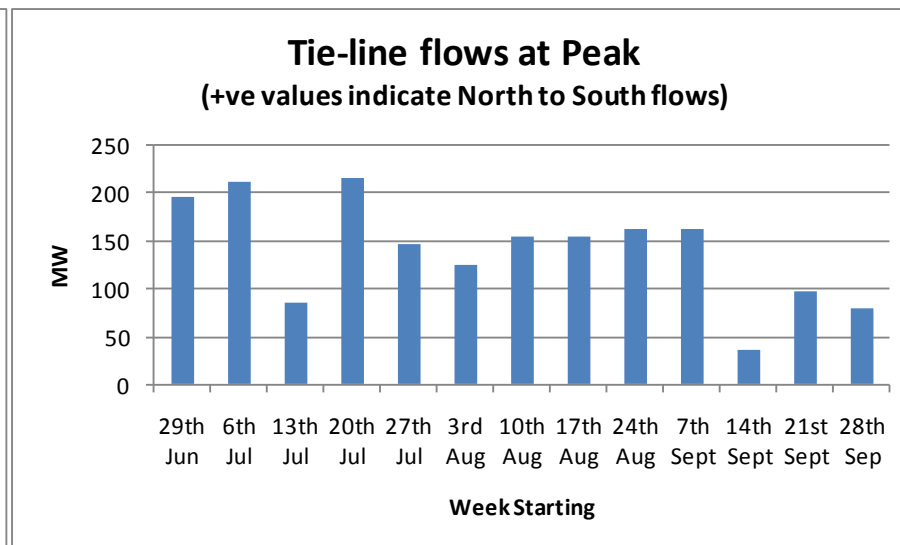
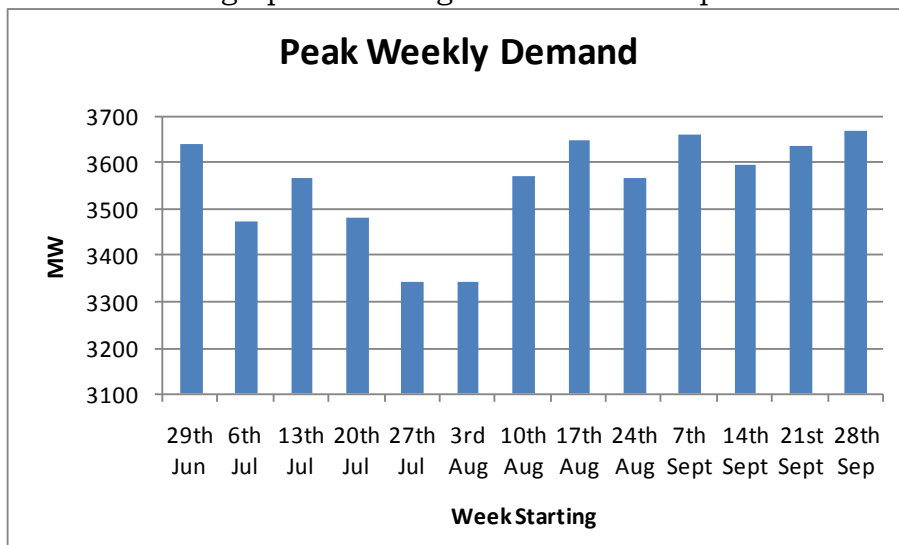
Week starting	6th Jul	13th Jul	20th Jul	27th Jul	31st Jul	3rd Aug	10th Aug	17th Aug	24th Aug	7th Sep	14th Sep	21st Sep	28th Sep
Minimum Wind	17	11	22	28	65	10	6	32	32	76	15	7	35
Average Wind	166	279	187	302	413	310	280	379	421	421	197	133	322
Maximum Wind	415	968*	680	886	975*	717	730	788	934	951	950	519	889

¹ Sampled and estimated figures for the output of wind (updated every 15 minutes) are on the EirGrid website along with figures for demand updated every 15 minutes. Details of the total amount of wind connected to the system can be found on www.eirgrid.com.

*968 MW is a new record for the system and was reported at 21.30 on Saturday 11th July. 975 MW, the highest record so far was reported over the bank holiday weekend. The peak reached 999 MW on Friday 31st July.

Generation System Performance Report: Quarter 3, 2009

Below are a number of graphs detailing recent trends at peak:



** Dispatchable Margin is calculated as the sum of the Availability of Dispatchable Plant, Wind and North-South tie-line flows (at the peak) less the peak demand