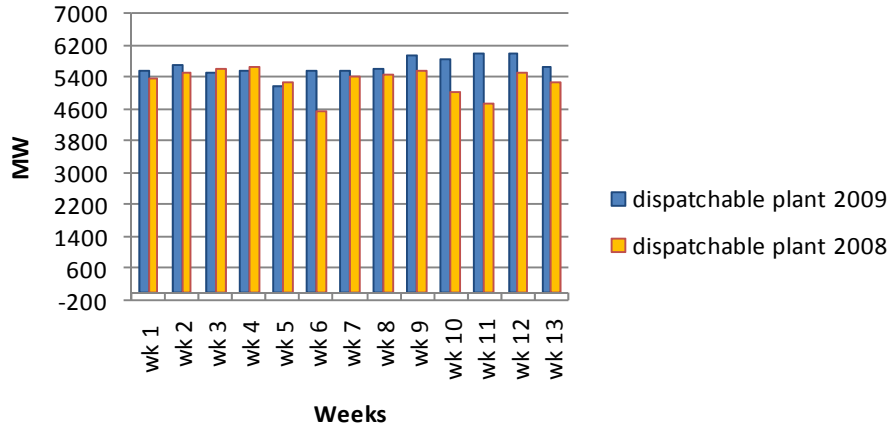
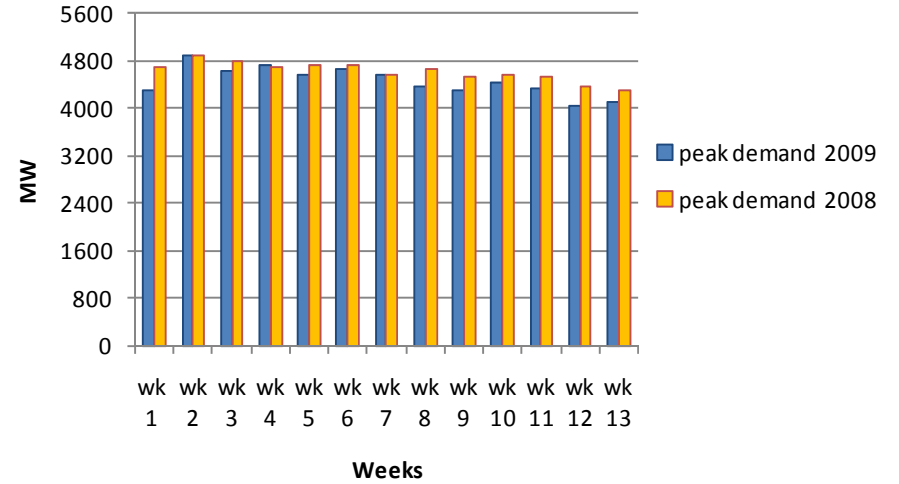


## Quarter 1 Overview 2009 & Comparison with Quarter 1 2008

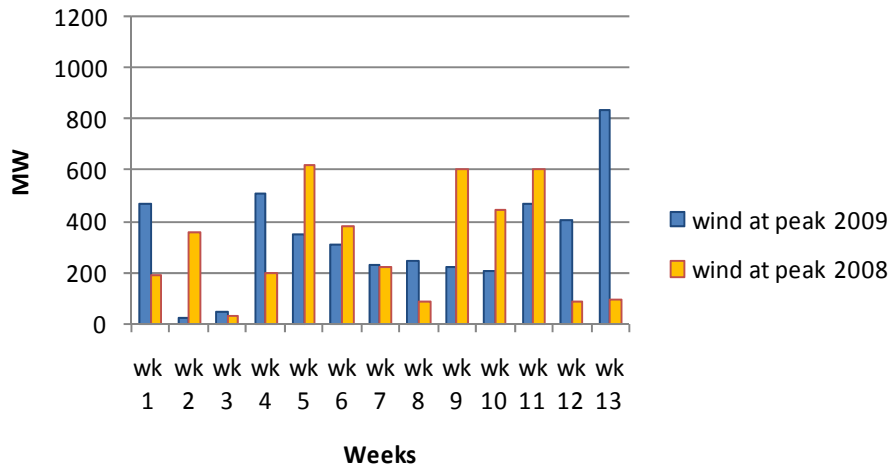
### Total Dispatchable Plant at Peak Q1 2009 vs Q1 2008



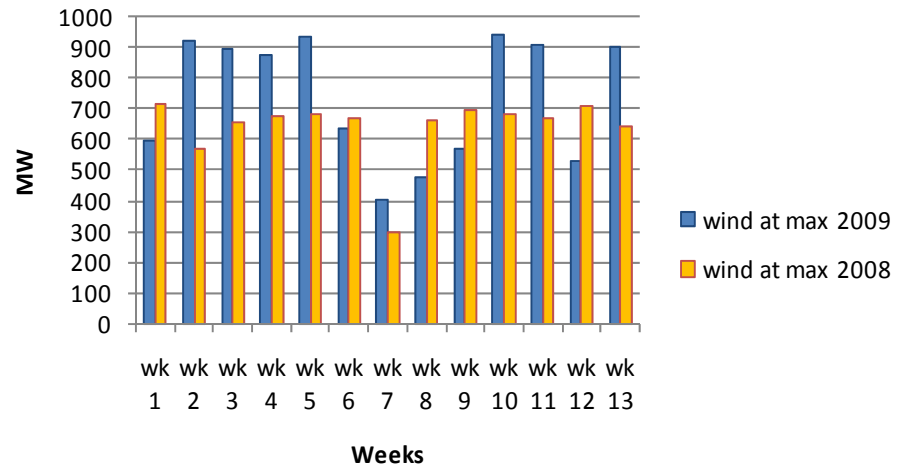
### Peak Demand Q1 2009 vs Q1 2008



### Wind at Peak Q1 2009 vs Q1 2008

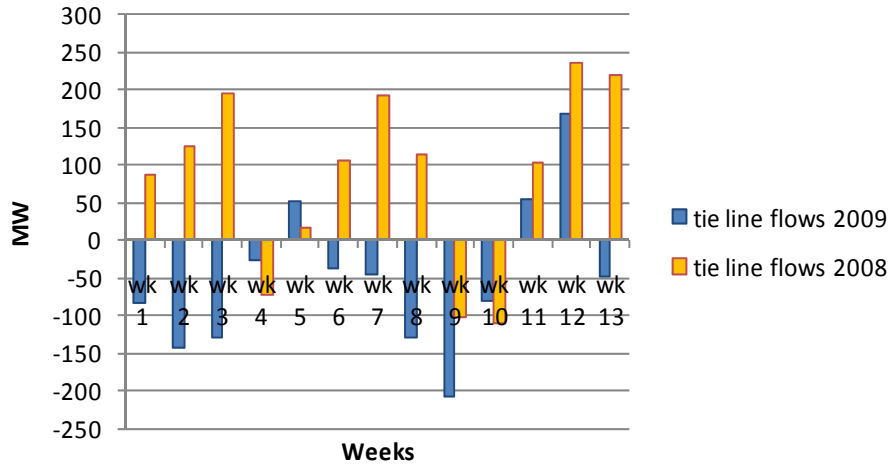


### Maximum Wind Values Q1 2009 vs Q1 2008



## Quarter 1 Overview 2009 & Comparison with Quarter 1 2008

### Tie-Line Flows at Peak Q1 2009 vs Q1 2008



### Margin at peak Q1 2008 vs. 2009

