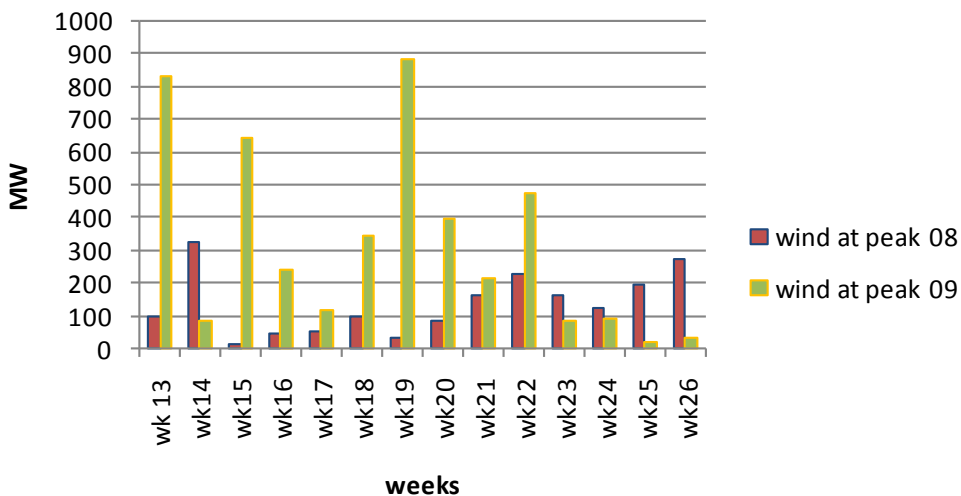
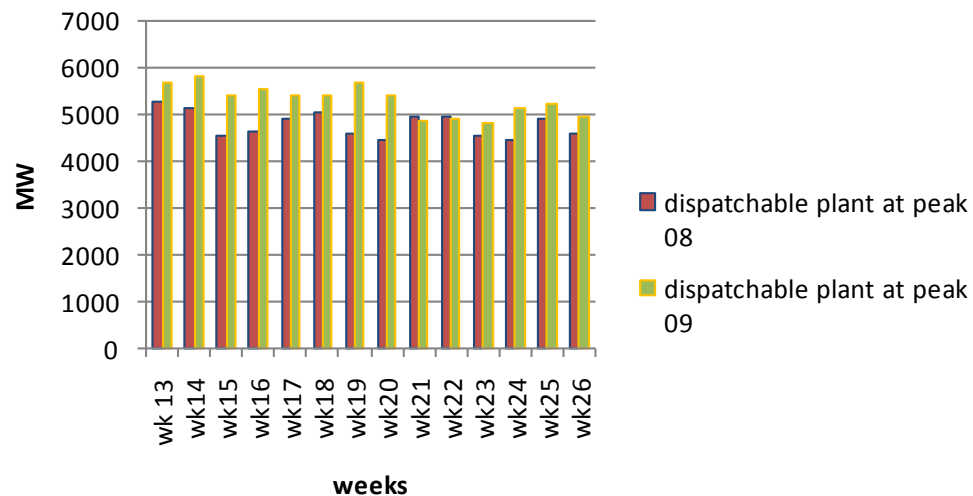


# Quarter 2 Overview 2009 & Comparison with Quarter 2 2008

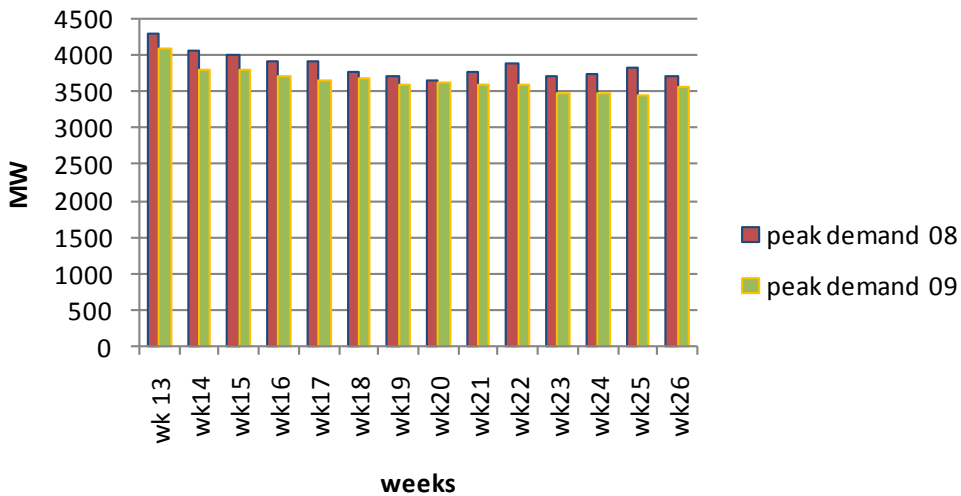
### Wind at Peak Q2 2009 vs Q2 2008



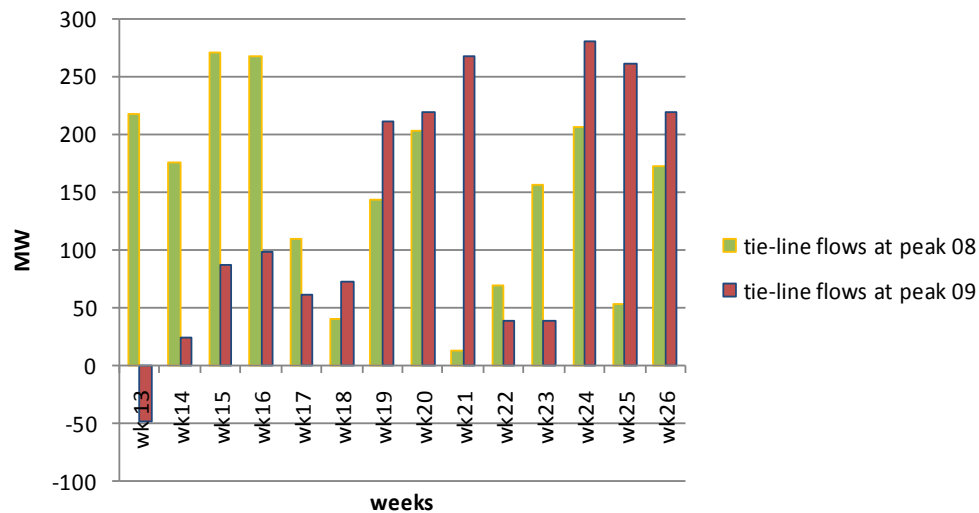
### Dispatchable Plant at Peak Q2 2009 vs. Q2 2008



### Peak Demand Q2 2009 vs Q2 2008



### Tie-Line Flows at Peak Q2 2009 vs Q2 2008



## Quarter 2 Overview 2009 & Comparison with Quarter 2 2008

