

# Generation System Performance Report: Year 2007

The Commission publishes a weekly update providing a summary to the market of relevant information concerning generation on the Irish system. This summary document compiles and presents these reports on the generation system performance for the Year 2007. All figures are in Megawatts.

The information presented is provided by EirGrid. Further, more detailed information can be found on the website [www.eirgrid.com](http://www.eirgrid.com). Any comments/queries on this report should be addressed to Dana Kelleher at [dkelleher@cer.ie](mailto:dkelleher@cer.ie).

## **Generation System Performance Report for Year 2007:**

### ***Weekly Peak Figures - Quarter 1***

<b><i>Week starting</i></b>	<b><i>1st Jan</i></b>	<b><i>8th Jan</i></b>	<b><i>15th Jan</i></b>	<b><i>22nd Jan</i></b>	<b><i>29th Jan</i></b>	<b><i>5th Feb</i></b>	<b><i>12th Feb</i></b>	<b><i>19th Feb</i></b>	<b><i>26th Feb</i></b>	<b><i>5th Mar</i></b>	<b><i>12th Mar</i></b>	<b><i>19th Mar</i></b>	<b><i>26th Mar</i></b>
Peak Demand	4652	4695	4746	4910	4800	4921	4672	4599	4519	4615	4433	4608	4095
Availability of Dispatchable Plant	5254	4820	5466	5534	5428	5128	5239	5365	4951	4782	4591	4881	4806
Wind	552	583	408	271	27	548	532	516	28	600	76	149	278
Interconnector Flows	96	177	62	57	19	18	63	63	35	120	175	147	176
<b>Dispatchable Margin</b>	<b>1250</b>	<b>885</b>	<b>1190</b>	<b>952</b>	<b>674</b>	<b>773</b>	<b>1162</b>	<b>1345</b>	<b>495</b>	<b>887</b>	<b>409</b>	<b>569</b>	<b>1165</b>

### ***Weekly Wind Figures<sup>1</sup>- Quarter 1***

<b><i>Week starting</i></b>	<b><i>1st Jan</i></b>	<b><i>8th Jan</i></b>	<b><i>15th Jan</i></b>	<b><i>22nd Jan</i></b>	<b><i>29th Jan</i></b>	<b><i>5th Feb</i></b>	<b><i>12th Feb</i></b>	<b><i>19th Feb</i></b>	<b><i>26th Feb</i></b>	<b><i>5th Mar</i></b>	<b><i>12th Mar</i></b>	<b><i>19th Mar</i></b>	<b><i>26th Mar</i></b>
Minimum Wind	95	129	8	8	3	3	12	25	5	27	46	13	3
Average Wind	378	426	400	211	142	212	265	261	296	404	371	182	121
Maximum Wind	617	624	617	384	515	595	640	584	632	614	629	575	417

<sup>1</sup> Sampled and estimated figures for the output of wind (updated every 15 minutes) are on the EirGrid website along with figures for demand updated every 15 minutes. Details of the total amount of wind connected to the system can be found on [www.eirgrid.com](http://www.eirgrid.com).

# Generation System Performance Report: Year 2007

## **Weekly Peak Figures - Quarter 2**

<b>Week starting</b>	<b>2nd Apr</b>	<b>9th Apr</b>	<b>16th Apr</b>	<b>23rd Apr</b>	<b>30th Apr</b>	<b>7th May</b>	<b>14th May</b>	<b>21st May</b>	<b>28th May</b>	<b>4th June</b>	<b>11th June</b>	<b>18th June</b>	<b>25th June</b>
Peak Demand	3933	3781	3796	3946	3711	3842	3905	3840	3853	3769	3857	3924	3747
Availability of Dispatchable Plant	4205	4289	4284	4114	4247	4192	4301	4194	4238	3961	4145	4211	4600
Wind	107	4	88	100	10	452	330	193	225	48	72	264	547
Interconnector Flows	302	306	317	318	304	311	282	300	305	320	299	216	246
<b>Dispatchable Margin</b>	<b>681</b>	<b>818</b>	<b>893</b>	<b>586</b>	<b>850</b>	<b>1113</b>	<b>1008</b>	<b>847</b>	<b>915</b>	<b>560</b>	<b>659</b>	<b>767</b>	<b>1646</b>

## **Weekly Wind Figures - Quarter 2**

<b>Week starting</b>	<b>2nd Apr</b>	<b>9th Apr</b>	<b>16th Apr</b>	<b>23rd Apr</b>	<b>30th Apr</b>	<b>7th May</b>	<b>14th May</b>	<b>21st May</b>	<b>28th May</b>	<b>4th June</b>	<b>11th June</b>	<b>18th June</b>	<b>25th June</b>
Minimum Wind	6	3	8	6	9	23	21	10	6	4	3	3	31
Average Wind	76	97	112	196	179	227	333	150	170	54	91	155	245
Maximum Wind	317	243	442	625	604	651	708	562	582	242	325	483	581

## **Weekly Peak Figures - Quarter 3**

<b>Week starting</b>	<b>2nd July</b>	<b>9th July</b>	<b>16th July</b>	<b>23rd July</b>	<b>30th July</b>	<b>6th Aug</b>	<b>13th Aug</b>	<b>20th Aug</b>	<b>27th Aug</b>	<b>3rd Sept</b>	<b>10th Sept</b>	<b>17th Sept</b>	<b>24th Sept</b>
Peak Demand	3781	3867	3814	3670	3615	3673	3798	3880	3827	3906	3938	4015	4163
Availability of Dispatchable Plant	4229	4575	4007	4203	4259	4006	4272	4222	4574	4100 <sup>2</sup>	4451	5086	5000
Wind	514	102	64	124	416	49	61	222	10	50	33	387	81
Interconnector Flows	294	298	336	308	297	306	283	73	126	104	186	13	16
<b>Dispatchable Margin</b>	<b>1256</b>	<b>1108</b>	<b>593</b>	<b>965</b>	<b>1357</b>	<b>688</b>	<b>818</b>	<b>637</b>	<b>883</b>	<b>348</b>	<b>732</b>	<b>1471</b>	<b>934</b>

<sup>2</sup> This availability figure does not include units under test or units commissioning. Moneypoint 1 (305MW) and Huntstown 2 (400MW) were generating MW at peak last week.

## Generation System Performance Report: Year 2007

### *Weekly Wind Figures - Quarter 3*

<i>Week starting</i>	<i>2nd July</i>	<i>9th July</i>	<i>16th July</i>	<i>23rd July</i>	<i>30th July</i>	<i>6th Aug</i>	<i>13th Aug</i>	<i>20th Aug</i>	<i>27th Aug</i>	<i>3rd Sept</i>	<i>10th Sept</i>	<i>17th Sept</i>	<i>24th Sept</i>
Minimum Wind	17	1.5	1.5	5	9	2	11	17	3	1	1	19	20
Average Wind	259	124	48	158	146	89	191	144	163	54	159	270	191
Maximum Wind	587	486	185	477	636	268	586	473	361	263	505	553	635

### *Weekly Peak Figures - Quarter 4*

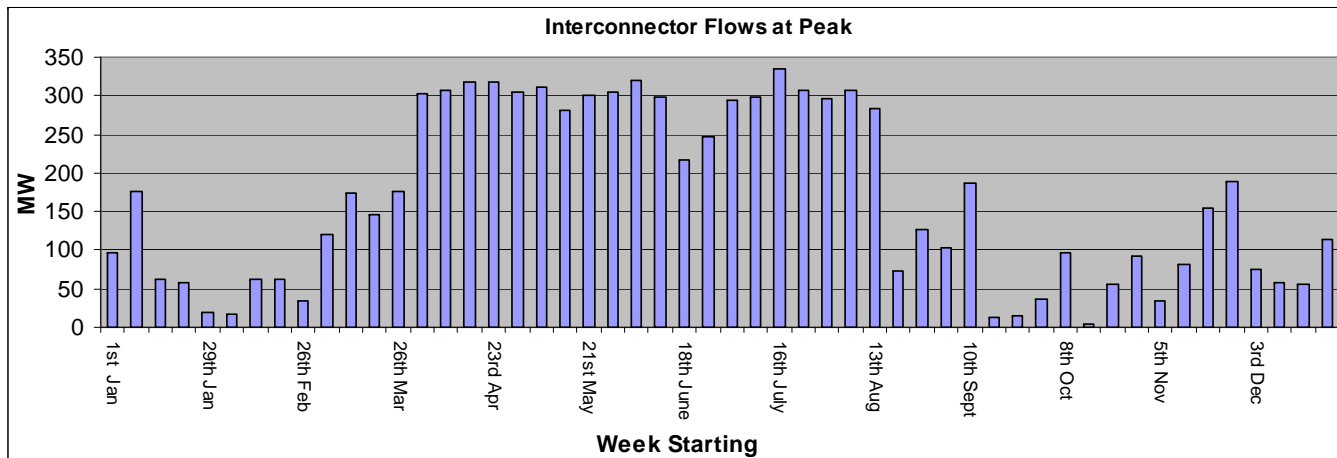
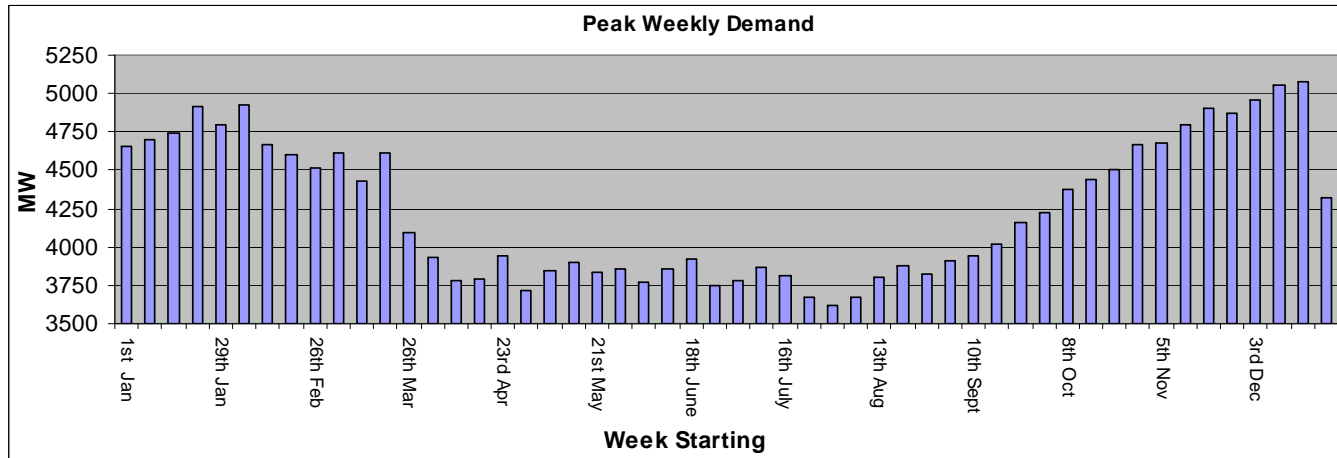
<i>Week starting</i>	<i>1st Oct</i>	<i>8th Oct</i>	<i>15th Oct</i>	<i>22nd Oct</i>	<i>29th Oct</i>	<i>5th Nov</i>	<i>12th Nov</i>	<i>19th Nov</i>	<i>26th Nov</i>	<i>3rd Dec</i>	<i>10th Dec</i>	<i>17th Dec</i>	<i>24th Dec</i>
Peak Demand	4221	4372	4444	4509	4666	4680	4794	4907	4867	4957	5060	5077	4325
Availability of Dispatchable Plant	4845	5019	5192	5106	5101	5346	5260	5456	5160	5212	5911	5641	5661
Wind	46	197	145	189	305	266	217	368	41	161	19	53	48
Interconnector Flows	37	97	4	56	93	35	82	155	188	76	58	55	114
<b>Dispatchable Margin</b>	<b>707</b>	<b>941</b>	<b>897</b>	<b>842</b>	<b>833</b>	<b>967</b>	<b>765</b>	<b>1072</b>	<b>522</b>	<b>492</b>	<b>928</b>	<b>672</b>	<b>1498</b>

### *Weekly Wind Figures - Quarter 4*

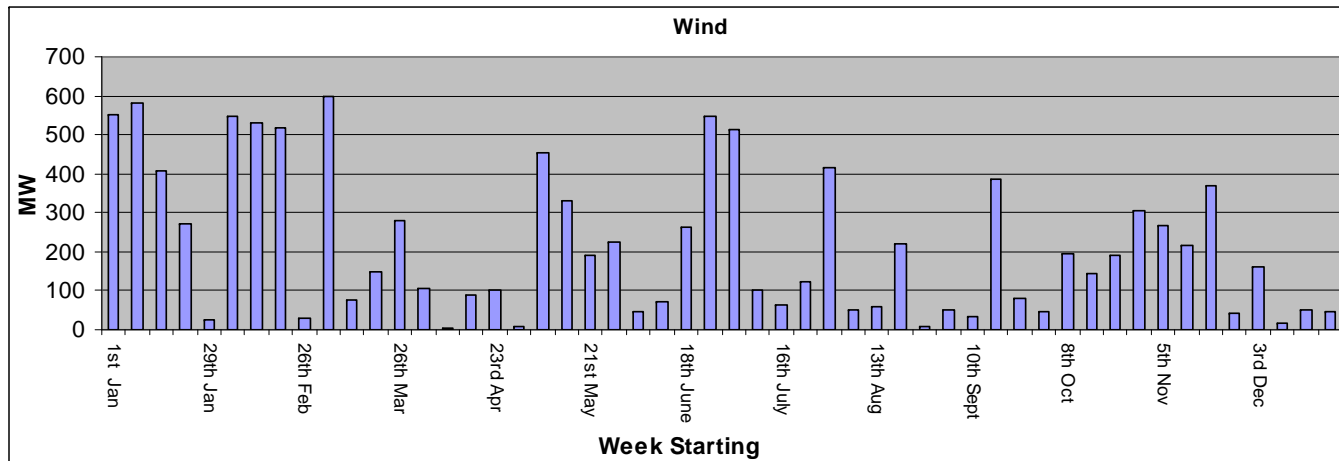
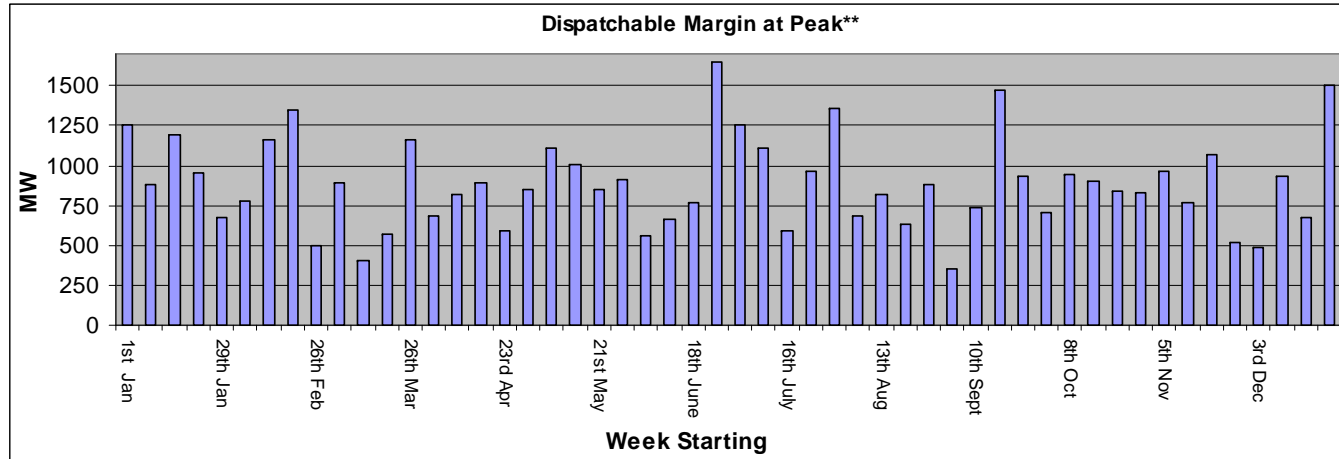
<i>Week starting</i>	<i>1st Oct</i>	<i>8th Oct</i>	<i>15th Oct</i>	<i>22nd Oct</i>	<i>29th Oct</i>	<i>5th Nov</i>	<i>12th Nov</i>	<i>19th Nov</i>	<i>26th Nov</i>	<i>3rd Dec</i>	<i>10th Dec</i>	<i>17th Dec</i>	<i>24th Dec</i>
Minimum Wind	1	8	3	16	2	30	4	9	21	64	15	25	45
Average Wind	85	124	161	248	194	327	185	263	275	452	422	304	355
Maximum Wind	294	315	496	659	457	674	560	605	638	676	674	672	683

# Generation System Performance Report: Year 2007

Below are a number of graphs detailing trends at the weekly peak in 2007:



# Generation System Performance Report: Year 2007



\*\* Dispatchable Margin is calculated as the sum of the Availability of Dispatchable Plant, Wind and Interconnector (at the peak) less the peak demand